

## CITGO Station: 322 Main Romeo MI



### Building

Store Square Feet	<b>1,277</b>
Lot Square Feet	<b>.30A</b>
Number of dispensers	<b>4</b>
County	<b>Macomb</b>
Prp Taxes	<b>\$7,094</b>
PIN	<b>28-04-02-154-012</b>

### Wholesale and Trading Information

Wholesaler Name	<b>Empire Petroleum</b>
Supply Agreement Remaining Term	<b>8 years</b>
Supply Agreement Pricing	<b>\$.01 plus freight</b>
Supply Agreement Payment Terms	<b>Negotiable</b>
Primary Supply Terminal	<b>Marathon Romulus</b>
Fuel Brand	<b>CITGO</b>

### Sale Terms - As Is

Sale Price	<b>\$575,000</b>
Transaction Type	<b>Fee</b>
Seller Financing Available	<b>Yes</b>
Terms	<b>2 yrs @ 8% w/ 20% down</b>
Lease Options / Terms	<b>\$2,000</b>

### Tank Information

1 x 10,000 UST, CPS, installed 1967	<b>unleaded</b>
1 x 10,000 UST, CPS, installed 1967	<b>unleaded</b>
1 x 8,000 UST, CPS, installed 1967	<b>unleaded</b>
1 x 10,000 UST, CPS, installed 1967	<b>premium</b>
1 x 10,000 UST, CPS, installed 1967	<b>premium</b>

### Contact

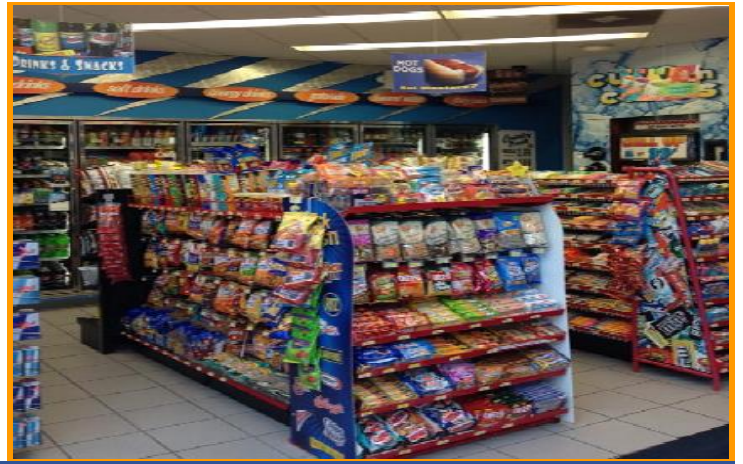
**Jake Leatherman**  
Cell: **(313) 995-0233**  
Email: **jleatherman@atlasoil.com**

Disclaimer -

Except as may otherwise be expressly set forth in a definitive agreement between the recipient of this information and Fast Track Ventures, LLC ("FTV") and/or any of its affiliates, including Atlas Oil Company, neither FTV nor any of its directors, officers, employees, attorneys, financial advisors, representatives, agents or affiliates shall be deemed to make or have made any representation or warranty (express or implied) as to the accuracy or completeness of any evaluation material provided to recipient, and neither FTV nor any of its directors, officers, employees, attorneys, financial advisors, representatives, agents or affiliates shall have any liability to recipient or any of its representatives arising out of their use of such evaluation material.



CITGO Station: 322 Main Romeo MI



Revised 02 07 18



CITGO Station: 322 Main Romeo MI



Revised 02 07 18



Area Map

## Contact

Jake Leatherman

Cell: (313) 995-0233

Email: [jleatherman@atlasoil.com](mailto:jleatherman@atlasoil.com)

### Disclaimer -

Except as may otherwise be expressly set forth in a definitive agreement between the recipient of this information and Fast Track Ventures, LLC ("FTV") and/or any of its affiliates, including Atlas Oil Company, neither FTV nor any of its directors, officers, employees, attorneys, financial advisors, representatives, agents or affiliates shall be deemed to make or have made any representation or warranty (express or implied) as to the accuracy or completeness of any evaluation material provided to recipient, and neither FTV nor any of its directors, officers, employees, attorneys, financial advisors, representatives, agents or affiliates shall have any liability to recipient or any of its representatives arising out of their use of such evaluation material.